

Our Handpainted ceramic tile is available on our handmade Recycled Clay Body. Our Recycled Clay Body uses recycled content and qualifies for numerous LEED points. All tile is made of raw materials sourced in the USA and handcrafted at our Aromas, CA factory. As with all handmade tile, some degree of variation is expected.

## RECOMMENDED APPLICATIONS

- Floors (including light commercial and heavy residential)
- Commercial & residential kitchens
- Wet environments like showers and baths
- Pools and fountains
- Walls, counters, vertical and horizontal surfaces
- Outdoor BBQ's, patios, stair risers, and fireplace faces and hearths in non-freezing climates.

## PHYSICAL TESTING PROPERTIES - BODY

- Physical Dimensions Thickness: approx. 5/16"
- Weight: Recycled Tile - about 3.7 lbs per foot
- Breaking Strength: 381 lbs
- Scratch Hardness: 6.0 mohs

## COLOR INFORMATION

- All glazes are designed and hand-mixed using all natural, 100% lead-free ingredients.
- Due to the handcrafted nature of our tile, variations in color, texture, crazing, and finish will occur in different degrees depending on the specific glaze. Individual color variation is graded V1 (least) to V4 (most). See the attached Color Guide for a full list of glazes, variations, and finishes. Finishes are not interchangeable.

## GROUT CONSIDERATIONS

Dark grout, contrasting grout, or grout that contains manganese has the potential to stain lighter color glazes and is not recommended. Be sure to educate your client on this potential staining with dark, heavily pigmented grouts and encourage them to test in a small area before installing.

## CUSTOM

Custom design options are available. Color, size, and shape can all be modified depending on the project. For more information, contact us with your specific project details.

## LEAD TIMES

- Lead times vary based on product and quantity. Please contact us or check our website for current lead times.
- Rush orders are available. An additional fee may apply.

## INSTALLATION

- Please refer to our [Tile Installation Guide](#). For homeowners, we always recommend hiring an experienced professional for best results.
- Use a natural color sanded grout and avoid contrasting grouts. For grout joints, we recommend 3/16" (1/4" for 12" modules). Note: Smaller joints are possible. If deviating from the recommended grout joint size, please have a suitable mock up made that will mimic conditions on the job site.
- Grout release and pre-sealing can help reduce the tile crazing from grout staining. Test grout before grouting.

## WARNING

This product can expose you to chemicals, including Silica, which is known to the State of California to cause cancer. For more information, go to [www.p65Warnings.ca.gov](http://www.p65Warnings.ca.gov)

To reduce exposure to silica dust, only use a wet saw when cutting any tile.

## MANUFACTURING INFORMATION

All of our tile is 100% manufactured by our team of experienced ceramicists in Aromas, CA. We repurpose old discarded tile, recycled wastewater, and glaze materials, and manufacture in our daylight, open-air factory. All material is sourced in the USA.

## ENVIRONMENTAL

### LEED Qualifications

The Recycled Clay Body may qualify for:

- MR 4.1/4.2: Recycled Content (1–2 points)
- MR 5.1/5.2: Regional Materials (2 points)
- EQ 4.3: Low-Emitting Materials (1 point)
- Our Recycled Clay Body is made from recycled products including pre-consumer recycled granite dust. In addition, we recycle our own tile and glaze waste and re-incorporate it into the recycled body.
- All of our glazes are 100% lead-free.
- Tile orders are packaged in recycled cardboard boxes and on recycled pallets or crates. We use recycled biodegradable peanuts, and/or other sustainable materials for protection.

### HPD Qualifying

Our most up-to-date [HPD documentation](#).

### B Corp

Fireclay is honored to be the first tile company to achieve B Corporation Certification, committing to empowering ourselves and other businesses to be forces of good in the community. See our [scorecard](#).

## CONSIDERATIONS

- Our ceramic tile is frost-resistant but not frost proof. Please contact us if you'd like to discuss a specific application.
- Our ceramic tile has a Class A fire rating.

## WARRANTY

If maintained properly, our tile can be enjoyed for a lifetime. However, we do not offer a warranty on our products. Follow installation directions and instructions closely to maintain the quality and longevity of your tile. We will help you every step along the way to ensure the end result is a beautiful installation that can be enjoyed for years.

## STANDARD SIZES & COLORWAYS

- All patterns are available in a 4x4 and 6x6 size. Actual dimensions are approximately 4 $\frac{1}{8}$ " x 4 $\frac{1}{8}$ " and 6 $\frac{1}{16}$ " x 6 $\frac{1}{16}$ ".
- The Block Shop x Fireclay Collection comes in four patterns, each with three standard colorways.

	Squiggle	Signal	Roundabout	Dot Dash
<b>Colorway</b>				
<b>GISSO</b> White Wash		●	●	
<b>CHARCOAL</b> White Wash + Raven	●			●
<b>LAPIS</b> White Wash + Lapis	●			●
<b>FRESCO</b> Jade			●	
<b>PLEIN AIRE</b> White Wash + Oyster Shell	●		●	●
<b>CLAY</b> White Wash + Milky Way + Sorbet		●		
<b>WOOD</b> Tusk + Sunflower + Iron Ore		●		

**Squiggle**  
4x4, 6x6



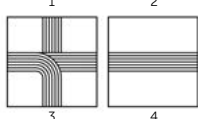
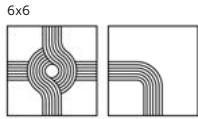
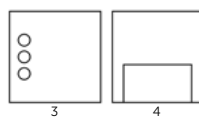
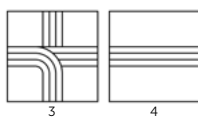
**Signal**  
4x4, 6x6



**Roundabout**  
4x4



**Dot Dash**  
4x4, 6x6



## HOW THEY'RE SOLD

All patterns can be purchased as individual tiles to accommodate any design. With multiple tiles within their patterns, Roundabout and Dot Dash are available in pre-configured multi-tile blocks. If purchasing blocks, ensure you are calculating the correct square footage required based on the dimensions of each block. See our [Installation Guide](#) for more information on how to install your Patterns and Blocks.

## CUSTOM COLORWAYS

If opting for a custom colorway, any of our opaque Gloss glazes can be used. Please note that there is a **25 piece minimum** when ordering a custom colorway on our Handpainted Tile. Below is a list of eligible glazes:

COLOR	BODY	COLOR VARIATION	FINISH	ACID SENSITIVE
Adobe	Recycled	2	Gloss	Yes
Akoya	Recycled	2	Gloss	No
Chartreuse	Recycled	3	Gloss	No
Daffodil	Recycled	3	Gloss	No
Driftwood	Recycled	2	Gloss	No
Dust Storm	Recycled	3	Gloss	No
Evening Glow	Recycled	2	Gloss	Yes
French Linen	Recycled	2	Gloss	Yes
Gardenia	Recycled	2	Gloss	No
Huckleberry	Recycled	2	Gloss	No
Jade	Recycled	2	Gloss	No
Lapis	Recycled	2	Gloss	No
Lemon Cream	Recycled	2	Gloss	No
Limon	Recycled	2	Gloss	No
Mesa	Recycled	2	Gloss	Yes
Milky Way	Recycled	2	Gloss	No
Moonshine	Recycled	2	Gloss	No
Navy Blue	Recycled	3	Gloss	Yes
Nickel	Recycled	2	Gloss	No
Oyster Shell	Recycled	2	Gloss	No
Peabody	Recycled	2	Gloss	No
Rainy Day	Recycled	2	Gloss	No
Raven	Recycled	2	Gloss	No
Shetland Wool	Recycled	2	Gloss	No
Skiping Stone	Recycled	2	Gloss	No
Spruce Gloss	Recycled	2	Gloss	No
Tomato Red	Recycled	3	Gloss	No
Turquoise	Recycled	2	Gloss	No
Tusk	Recycled	2	Gloss	No
White Wash	Recycled	2	Gloss	No
Wrought Iron	Recycled	2	Gloss	No

## VARIATION

- This collection is intended to reference the natural variation of Block Shop Textile's woodblock printing and irregularities in pattern alignment are expected.
- Glaze trailing is the unique signature of each painter and an expected characteristic of handpainted products.
- Variations in color, texture, crazing, and finish will occur in different degrees depending on the specific glaze.
- Size variance up to 1/8" can be expected.